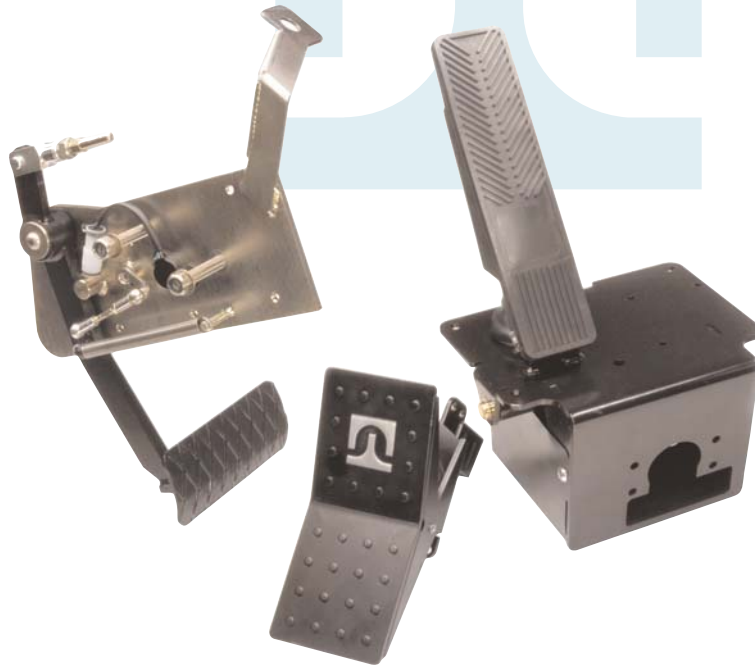


# Mechanical, Hydraulic, Electronic

## Foot Control



### Foot Control Industrial

Tuthill Controls has worldwide industry experience providing foot controls to meet specific customer requirements. These include rocker pedals, suspended pedals, integral floor-mounted pedals, and more. The foot control output can be electronic, hydraulic, solid linkage, flexible cable, or unique to the application. Hardware can be designed to meet specific envelope, geometry, load, adjustment, maintenance and environmental requirements. A wide range of components, materials, processes and surface finishes are available.

#### Description:

Mechanical, Hydraulic,  
Electronic  
Industrial Pedal Foot Control

#### Applications:

- Medium-duty trucks
- Heavy-duty trucks
- Construction equipment
- Landscaping equipment
- Warehouse equipment
- Farm equipment
- Buses

#### Features:

- Designed to meet specific customer requirements
- Available in a wide range of components, materials, processes and surface finishes

#### Other Related Products:

- Pull-Only Cable
- Rod End
- Clevis



# Mechanical, Hydraulic, Electronic

## Material

- Zinc Based Die-Cast Body
- Plated Steel Internal/External Components



Linking Motion  
& Control...  
The Tuthill  
Solution



- Please refer to the cautions/warnings and appropriate installation usage information in the Technical/Application Data sheet
- For application assistance/technical questions, please contact us at the appropriate location listed below or through our website at [www.tuthillcontrols.com](http://www.tuthillcontrols.com)



**TUTHILL**  
Controls Group

4401 South Orchard Street  
Tacoma, Washington 98466 USA  
Tel 253 475-1080 Fax 253 474-1623

2110 Summit Street  
New Haven, Indiana USA 46774  
Tel 260 749-5105 Fax 260 493-2387  
[www.tuthillcontrols.com](http://www.tuthillcontrols.com)

Diplocks Way-South Road  
Hailsham, East Sussex BN27 3JF, England  
Tel 44 1323 841510 Fax 44 1323 845848

Hingbergstrasse 79  
45468 Mulheim an Der Rhur, Germany  
Tel 49-208-300-650 Fax 49-208-300-6550